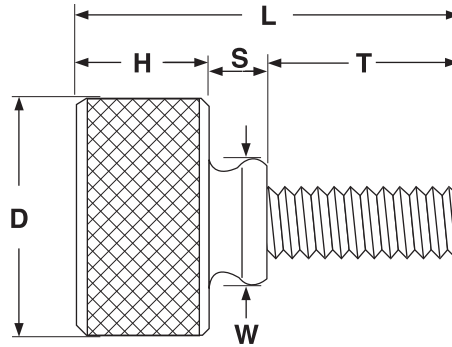


# Thumb & Wing Screws

With Washer Face/  
Shoulder



## KNURLED THUMB SCREWS WITH WASHER FACE

Thread Size x Thread Length	D		H		L		T		S	W	
	Head Diameter		Head Height		Overall Length		Thread Length		Shoulder Length	Washer Face Width	
	Max	Min	Max	Min	Max	Min	Max	Min	Ref	Max	Min
4-40 x 5/16	.395	.375	.203	.173	.515	.485	.322	.302	.125	.406	.344
4-40 x 3/8	.395	.375	.203	.173	.577	.547	.385	.365			
4-40 x 7/16	.395	.375	.203	.173	.640	.610	.448	.428			
4-40 x 1/2	.395	.375	.203	.173	.703	.673	.510	.490			
6-32 x 5/16	.395	.375	.203	.173	.515	.485	.322	.302			
6-32 x 3/8	.395	.375	.203	.173	.577	.547	.385	.365			
6-32 x 7/16	.395	.375	.203	.173	.640	.610	.448	.428			
6-32 x 1/2	.395	.375	.203	.173	.703	.673	.510	.490			
8-32 x 3/8	.395	.375	.203	.173	.577	.547	.385	.365			
8-32 x 7/16	.395	.375	.203	.173	.640	.610	.448	.428			
8-32 x 1/2	.395	.375	.203	.173	.703	.673	.510	.490			
8-32 x 9/16	.395	.375	.203	.173	.765	.735	.572	.552			
8-32 x 5/8	.395	.375	.203	.173	.827	.797	.635	.615			
10-32 x 3/8	.458	.438	.203	.173	.577	.547	.385	.365			
10-32 x 7/16	.458	.438	.203	.173	.640	.610	.448	.428			
10-32 x 1/2	.458	.438	.203	.173	.703	.673	.510	.490			
10-32 x 9/16	.458	.438	.203	.173	.765	.735	.572	.552			
10-32 x 5/8	.458	.438	.203	.173	.827	.797	.635	.615			

<b>Description</b>	A one-piece screw with a cylindrically-shaped head, a fully-threaded shank with a unified thread pitch, and a shoulder section that separates the two. The head has a smooth, flat top and a roughened surface around its full circumference. The shoulder has two sections, the wider of the two which serves as a washer face directly above the threaded shank.	
<b>Applications / Advantages</b>	For use in applications where periodic manual adjustment is required and where finger pressure can supply sufficient tightening torque. The washer face-design allows the head of the screw to seat flush against the mating surface and guards against over-tightening the screw which could strip the mating threads.	
<b>Material</b>	303 Stainless Steel	Aluminum Alloy 6061 T6
<b>Plating</b>	Parts are typically supplied without any additional coating or finish.	