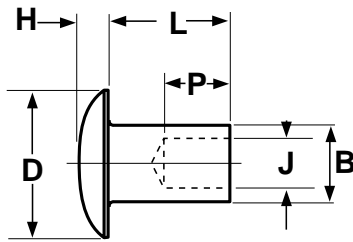


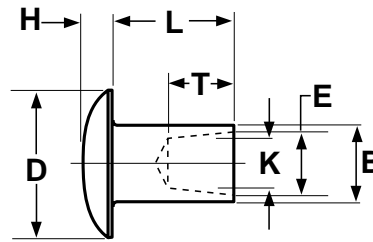
Rivets

Semi-tubular Rivets

Oval Heads



Type S



Type T

SEMI-TUBULAR OVAL HEAD RIVETS														ANSI/ASME B18.7		
Nominal Size	B		D		H		E		K	T	J		P	Tolerance on Lengths		
	Shank Diameter		Head Diameter		Head Thickness		Type T Taper Hole Rivets				Type S Straight Hole Rivets			Up to and including 4 times shank dia.	Over 4 times shank dia. and up to and including 8 times shank dia.	Over 8 times shank dia.
							Hole Dia. at End of Rivet		Hole Dia. at Bottom of Hole	Hole Depth to Start of Apex	Hole Dia. at End of Rivet		Hole Depth to Start of Apex			
	Max	Min	Max	Min	Max	Min	Max	Min	Min	Min	Max	Min	Nom			
0.061	0.061	0.058	0.114	0.104	0.019	0.015	0.046	0.042	0.032	0.042	0.044	0.039	0.046	±0.007	±0.008	±0.010
0.089	0.089	0.085	0.152	0.142	0.026	0.020	0.068	0.064	0.050	0.057	0.068	0.062	0.064	±0.007	±0.008	±0.010
0.099	0.099	0.095	0.192	0.182	0.032	0.026	0.076	0.072	0.057	0.065	0.076	0.070	0.077	±0.007	±0.008	±0.010
0.123	0.123	0.118	0.223	0.213	0.038	0.030	0.095	0.091	0.079	0.082	0.090	0.084	0.094	±0.007	±0.010	±0.015
0.146	0.146	0.141	0.239	0.229	0.045	0.035	0.112	0.106	0.085	0.104	0.107	0.100	0.126	±0.010	±0.012	±0.015
0.188	0.188	0.182	0.318	0.306	0.065	0.055	0.145	0.139	0.110	0.135	0.141	0.134	0.155	±0.010	±0.012	±0.015
0.217	0.217	0.210	0.444	0.430	0.076	0.061	0.166	0.158	0.136	0.151	0.163	0.155	0.189	±0.010	±0.015	±0.020
0.252	0.252	0.244	0.507	0.493	0.085	0.071	0.191	0.181	0.150	0.183	0.184	0.176	0.219	±0.010	±0.015	±0.020
0.310	0.310	0.302	0.570	0.554	0.100	0.086	0.235	0.225	0.190	0.214	0.219	0.211	0.243	±0.010	±0.015	±0.020

Description	A small, headed metal fastener having a coaxial cylindrical or tapered hole which does not exceed 112% of the mean shank diameter in the end opposite a slightly rounded head. The head is approximately 50% wider than the diameter of the rivet body.
Applications/Advantages	Easier to clinch than solid rivets. The hole reduces riveting forces for riveting tooling while the remaining clinched solid shank can provide comparable shear strengths to other common riveting products. The oval head style is popular because of its low profile head and neat, finished appearance. The fastener is installed with a riveting hammer.
Material	Steel: Low carbon steel (containing 0.1% carbon or less) Aluminum: Grades 5056, 1100, 2017, 2117 or 6053